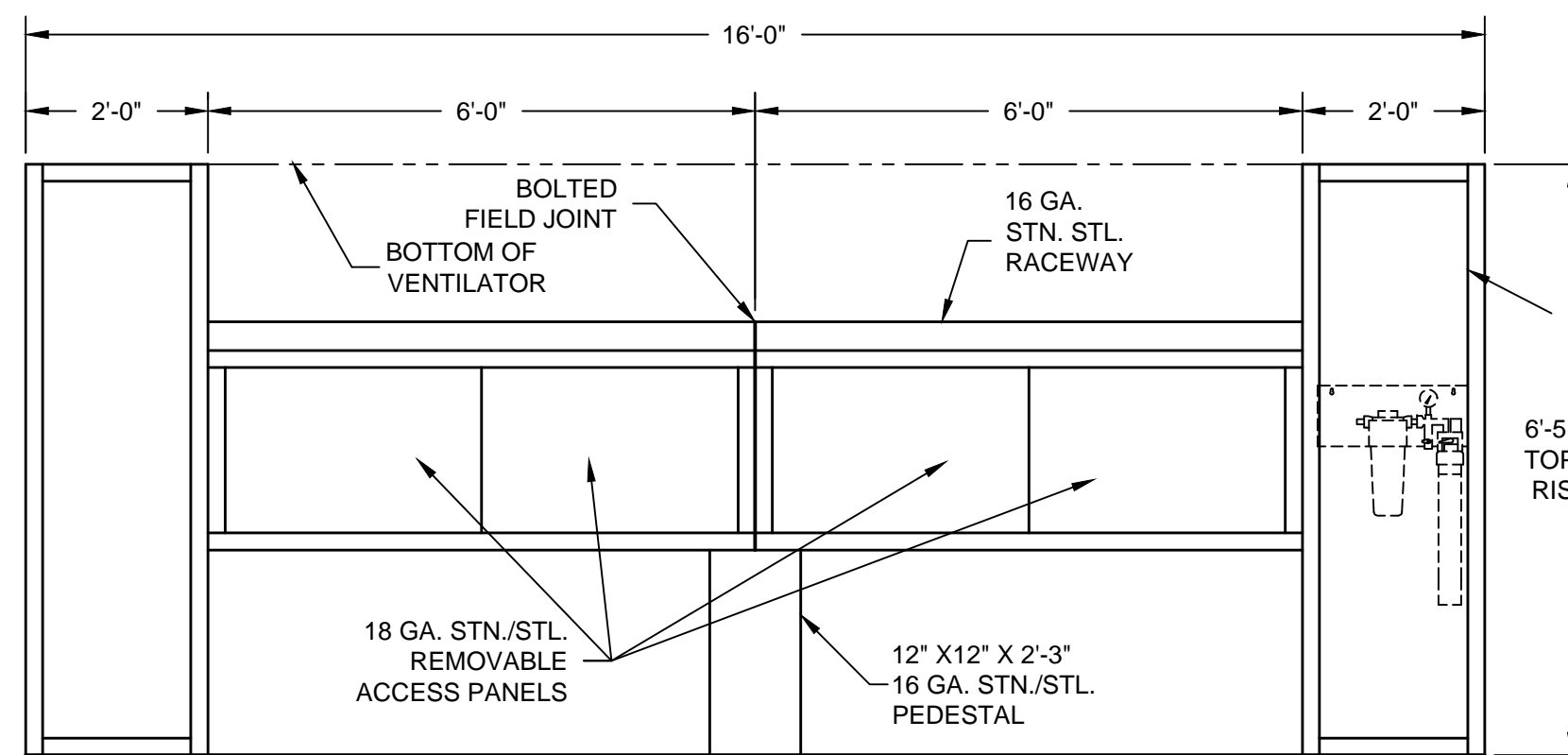


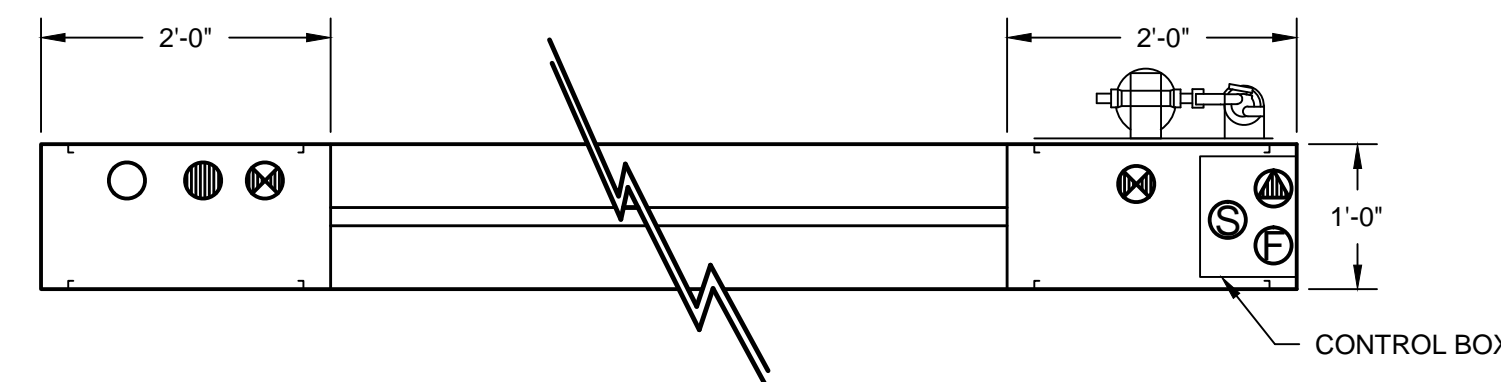
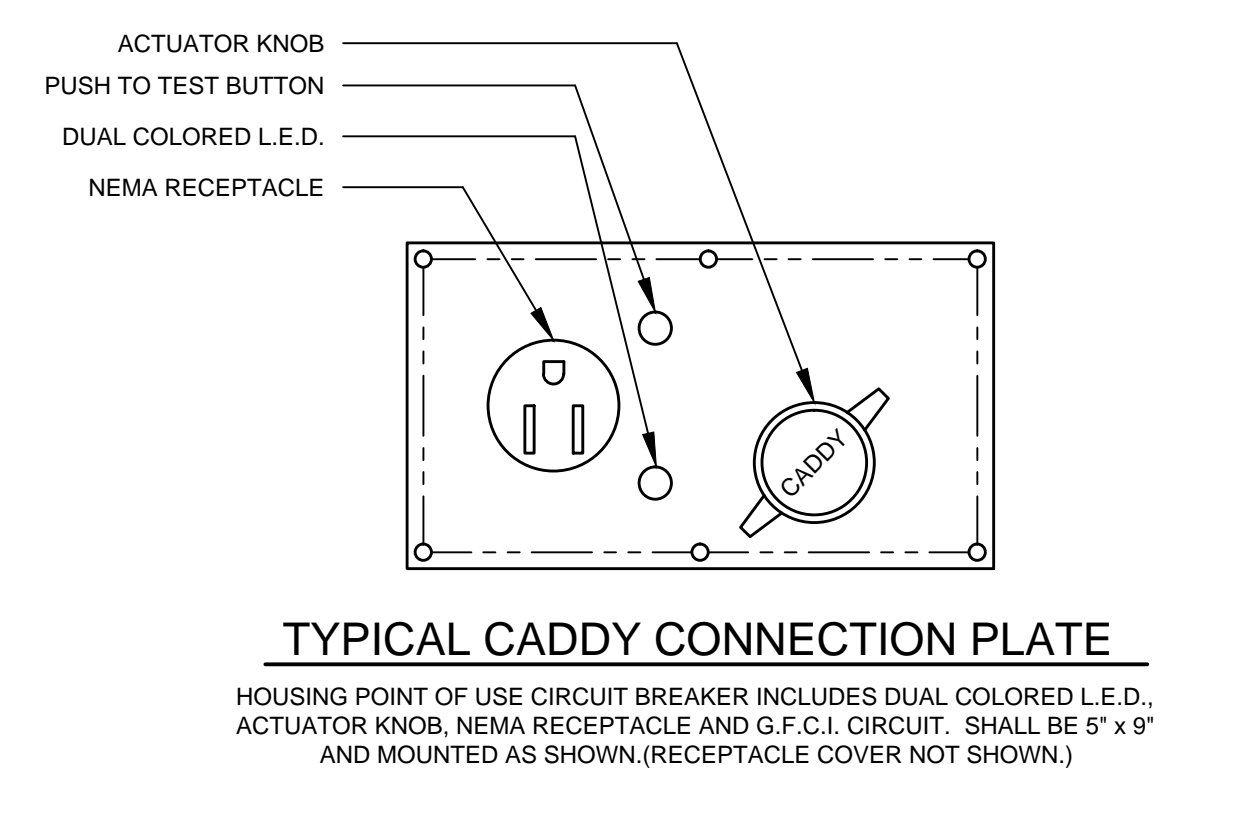
PLAN VIEW
SCALE: 1/2"=1'-0"

ALL UTILITIES INCLUDE 25% OVER-CAPACITY FOR FUTURE EXPANSION OR CHANGES



ELEVATION VIEW
SCALE: 1/2"=1'-0"

CODE COMPLIANCE
THE UTILITY DISTRIBUTION SYSTEM SHALL BE U.L. LISTED UNDER THE CATEGORY "UTILITY DISTRIBUTION SYSTEM" AND MANUFACTURED IN ACCORDANCE WITH THE NATIONAL ELECTRICAL CODE (NEC), NATIONAL ELECTRICAL MANUFACTURER'S ASSOCIATES (NEMA), NATIONAL FIRE PROTECTION ASSOCIATION (NFPA) PAMPHLET NUMBER 96 AND 54, UNIFORM PLUMBING CODE (UPC), AMERICAN SOCIETY OF MECHANICAL ENGINEERS (ASME), NATIONAL SANITATION FOUNDATION (NSF), AND OCCUPATIONAL SAFETY AND HEALTH ADMINISTRATION (OSHA) USING ONLY U.L. LISTED, BUREAU OF MINES RATES, AGA CERTIFIED AND CGA CERTIFIED COMPONENTS.

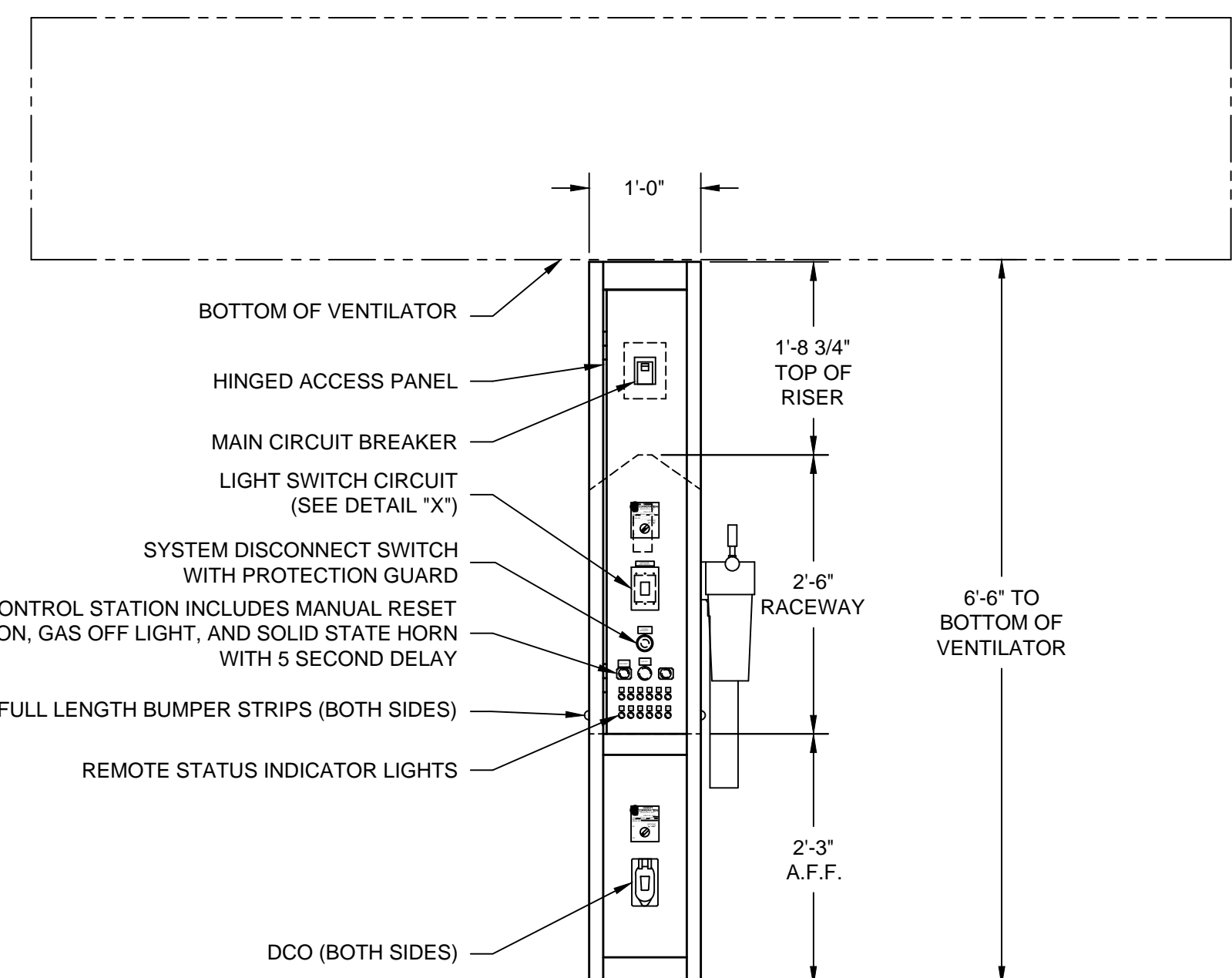


RISER DETAIL
SCALE: 3/4" = 1'-0"

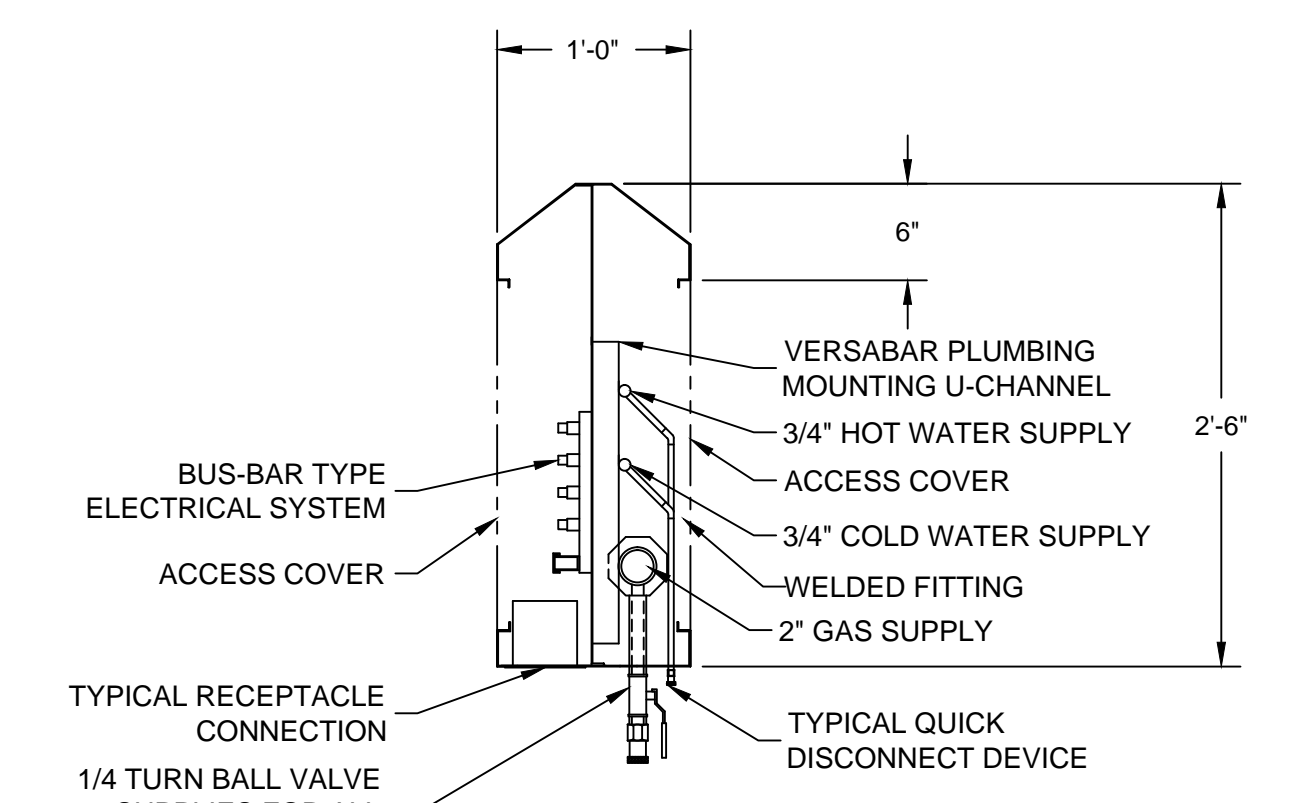
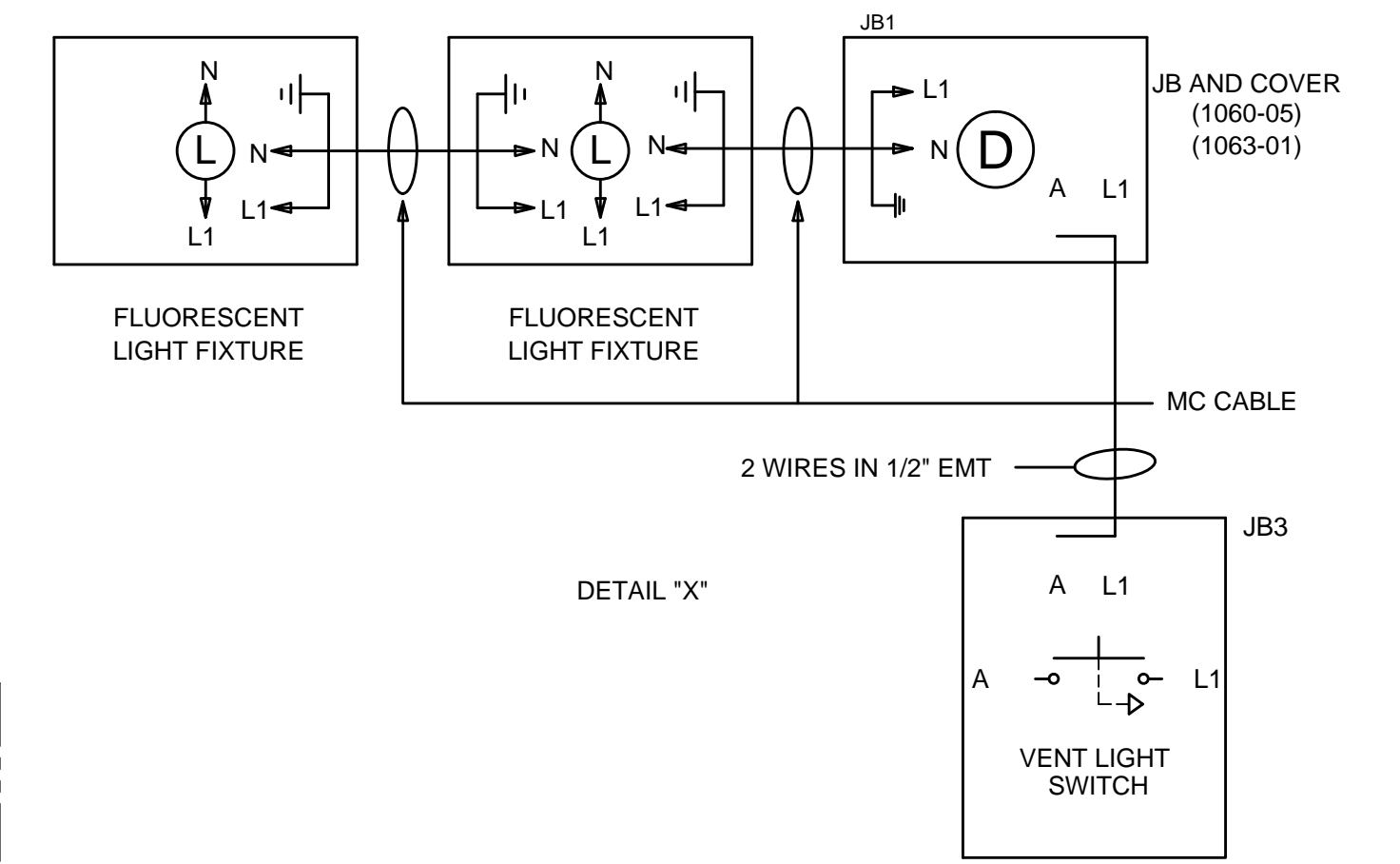
EVERPURE KLEENSTEAM MODEL # AR-X 9797-00 WATER FILTER TO BE FURNISHED AND INSTALLED BY CADDY.

*** - EVERPURE KLEENSTEAM MODEL# AR-X 9797-00 WATER FILTER TO BE HARD CONNECTED TO UDS BY CADDY AT TIME OF UDS MANUFACTURE.**

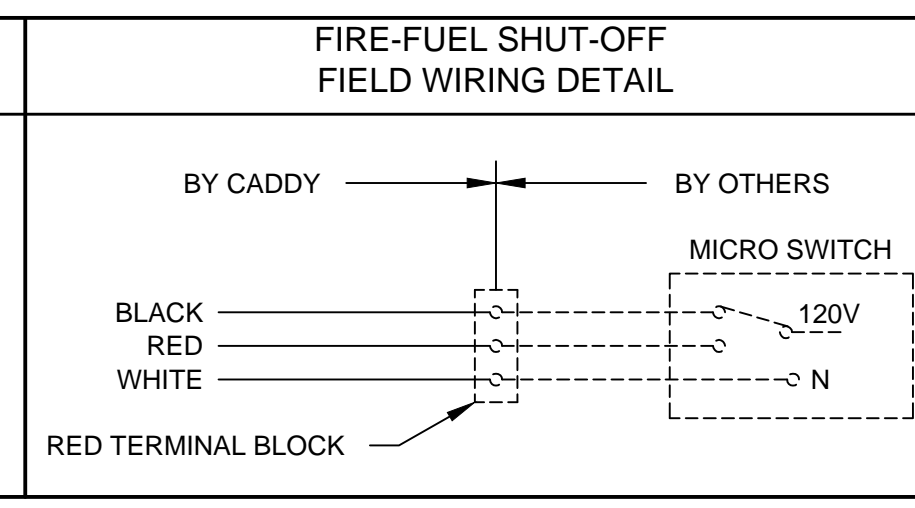
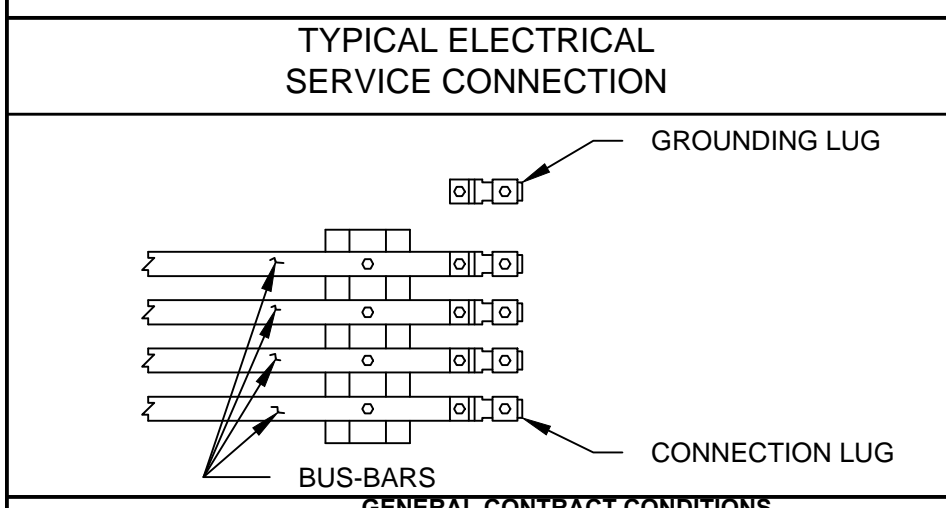
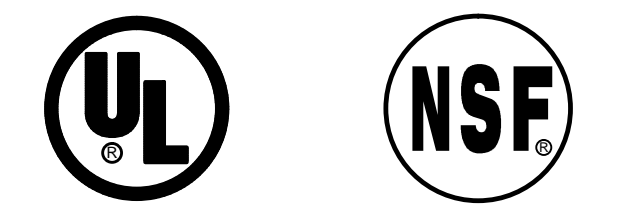
**** - EVERPURE KLEENSTEAM MODEL# AR-X 9797-00 WATER FILTER TO BE HARD CONNECTED TO STEAMER #29 BY F.S.E.C. AT TIME OF UDS INSTALLATION.**



END VIEW Z-Z
SCALE: 3/4" = 1'-0"



SECTION Y-Y
SCALE: 1" = 1'-0"



GENERAL CONTRACT CONDITIONS
ELECTRICAL WORK DONE BY CADDY CORPORATION IS EXECUTED IN COMPLIANCE WITH STANDARDS PUBLISHED BY THE UNDERWRITERS LABORATORIES, INC. INSOFAR AS APPLICABLE, AND THE LATEST EDITION OF THE NATIONAL ELECTRICAL CODE (NEC). CADDY CORPORATION DOES NOT ACCEPT ANY RESPONSIBILITY FOR THE REQUIREMENTS OF ANY REGIONAL AND/OR LOCAL CODES THAT ADD OR DEVIATED FROM THE ACCEPTED STANDARDS OF THE ABOVE AGENCIES. ANY FIELD WORK RELATING TO THE MODIFICATION OF ELECTRIC OR PLUMBING SYSTEMS, TO MEET REGIONAL OR LOCAL CODE REQUIREMENTS IS TO BE DONE BY OTHERS AND WITHOUT BACK CHARGES TO CADDY CORPORATION, UNLESS THESE CONDITIONS WERE PREVIOUSLY BROUGHT TO OUR ATTENTION AND ARE EXPRESSLY INCLUDED IN OUR WRITTEN QUOTATION. ALL WIRING AND PLUMBING AT THE JOB SITE IS THE RESPONSIBILITY OF OTHERS. EQUIPMENT WILL BE CONSTRUCTED IN ACCORDANCE WITH OUR DRAWING(S) WHICH MUST BE APPROVED PRIOR TO FABRICATION. ANY SUBSEQUENT CHANGES REQUIRED MUST BE SUBMITTED TO US IN WRITING AND ACKNOWLEDGED ON OUR STANDARD FORM.

NOTES

1. THIS UNIT IS TO BE SHIPPED IN TWO (2) PIECES AS SHOWN IN PLAN VIEW. [] VERIFY FOR ENTRANCE INTO BUILDING AND UNIT AREA.
2. [] VERIFY ROUGHING SCHEDULE.
3. NAT'L SANITATION FOUNDATION-STANDARD #2-"FOOD SERVICE EQUIPMENT". UNIFORM BUILDING CODE (ICBO). UNDERWRITERS LAB INC. U.L. LISTED UNDER FILE #E60695.
4. ALL "VERIFIES" ON THIS DRAWING MUST BE CONFIRMED. YOUR FABRICATION APPROVAL SHALL INDICATE YOUR ACCEPTANCE AS SHOWN.
5. ELECTRICAL CONTRACTOR MUST ROUGH-IN UP TO THE BUS-BAR CONNECTION LUGS. APPROXIMATE 36" A.F.F.
6. UNIT SHALL BE PROVIDED WITH TAMPERPROOF HARDWARE PRISON SECURITY PACKAGE.

ROUGH-IN SCHEDULE		PLEASE SPECIFY			
SYM	QTY	DESCRIPTION	CEILING	FLOOR	OTHER
⊗	1	120/208V, 3Ø, 60Hz., 100 AMPS			
⊗	2	2" GAS SUPPLY 1,435 MBH CONNECTED LOAD (LOOPED) (3,400 MBH SYSTEM CAPACITY)			
⊗	1	3/4" HOT WATER SUPPLY			
⊗	1	3/4" COLD WATER SUPPLY			
⊗	1	FIRE FUEL SHUT-OFF SEE DETAIL			
⊗	1	VENT. LIGHT SWITCH			

REVISIONS			
REV	DATE	BY	REMARKS
A	10-29-04	BAH	REVISED PER APPROVED DRAWING.

CADDY AirSystems
509 SHARPTOWN ROAD
P.O. BOX 345 BRIDGEPORT NJ 08014
Tel:(856) 467-4222 Fax:(856) 467-5511

EQUIPMENT SCHEDULE

UTILITY DISTRIBUTION SYSTEM
MODEL: CA-ID-EGW-016
16'-0" LONG

CADDY NO. 07275-1 ITEM NO. 24

JOB: MAD RIVER-STEBBINS HIGH SCHOOL
LOC: OHIO
CUST:
CUST#:

DWG# D-1-07275

SHT 1 OF 2

